



# 911 LineBacker System

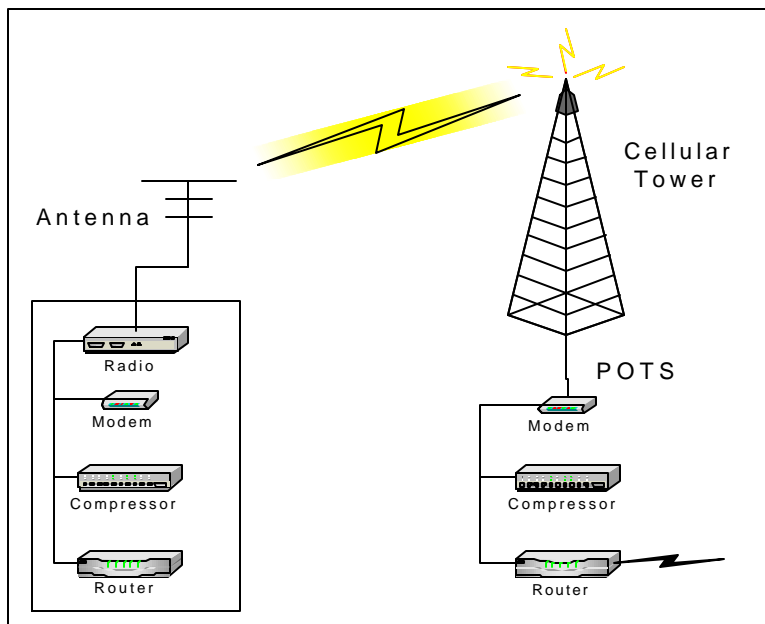
## Cellular and POTS Back-up for Routers

### Features:

- 64,000 & 128,000 bps speeds
- Router controlled recovery
- Command based operator interface
- ASH Data Compression
- Optional Encryption Available

### System Description:

Wired or wireless data back-up system provides Router based communications over a single or dual analog POTS or cellular network connections. When the Frame Relay or leased telephone lines have been interrupted the Router will activate its back-up port and this system will connect networks over Cellular channels to a POTS (Plain Old Telephone Service) line. Once the leased telephone line is restored the cellular channels are terminated. The throughput averages 64,000 bps per channel. (see figure below)



### Specifications:

Cellular Radio  
Cellular Modem  
Communication Modes  
Data Throughput Rates  
Power  
Size & Weight

Motorola 3 Watt  
14,400 bps Synchronous modulation  
RS-232 & V.35  
64,000 bps per channel compressed  
120 V AC to 220 V AC  
6"W x 12"L x 2"H